

Welcome to our Listening Exercise

Please come inside so we can hear
your thoughts on the future of
Edmonton Green.



THE FUTURE OF EDMONTON GREEN

LISTENING EXERCISE



We would like to hear your thoughts on the future of Edmonton Green

At the beginning of 2019 we carried out a survey to find out what improvements local people would like to see to the centre. We received a fantastic response with 298 people taking part. When asked what you would like to see improved at Edmonton Green Shopping Centre, this is how you responded.

50%

wanted **better lighting**

49%

wanted **improved security**

47%

said they'd like the centre to have a **refreshed look**

47%

wanted **better toilet facilities**

42%

wanted the centre to be **cleaner**

40%

wanted **better play areas**

34%

asked for more **greenery & planting**

33%

wanted more and **better bins**

24%

asked for **improved furniture**

23%

asked for **better signage**

What we have done so far

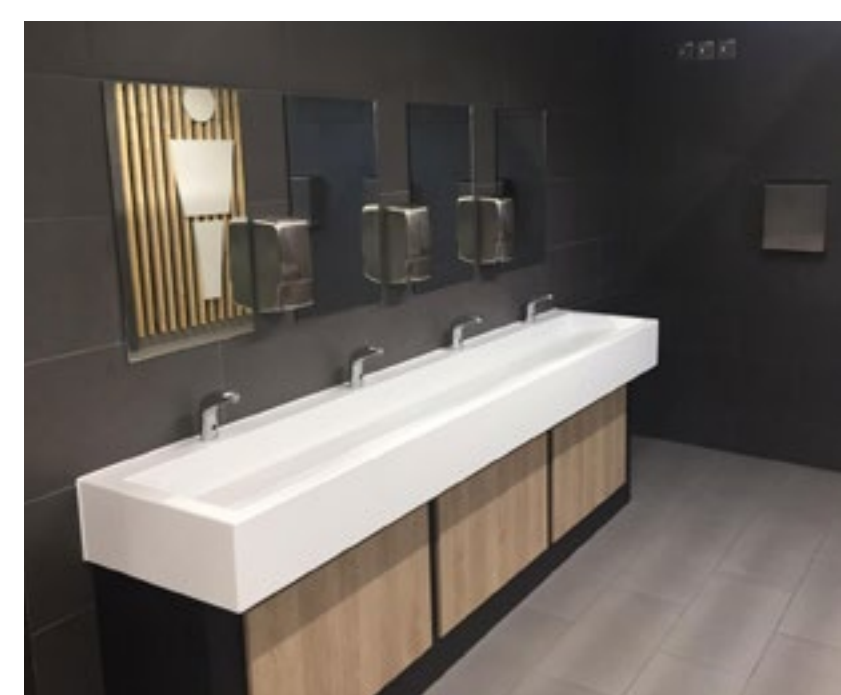
We have made a substantial investment improving Edmonton Green.



We have increased the level of security to make it a safer place for all. This has led to a 48% decrease in shoplifting incidents and 9% decrease in total incidents across the shopping centre in 2019, compared to the previous year.



The entire centre has received a fresh lick of paint to contribute to the desired refreshed look.



We have installed brand-new toilets.



A brand-new community garden has been created, with the help of Churchfield Primary School, to increase the amount of greenery and planting.



We have built a brand-new children's playground, which opened to the public in November and includes a new climbing frame, slide and swing set.



We have added new street furniture including benches and bins.



New and improved lighting is being installed around the centre.



A new logo has been designed and we are updating all our signage with this modern branding.

Maximising the potential of Edmonton Green in the future

While we have installed new lighting and increased the level of security, Edmonton Green is not designed in a way that is conducive to creating a safe environment. It is inward looking, has an under used second level and has areas that encourage anti-social behaviour. The routes through the centre and the residential entrances could also be greatly improved. We are therefore looking to make further, substantial changes to Edmonton Green by redeveloping certain areas.



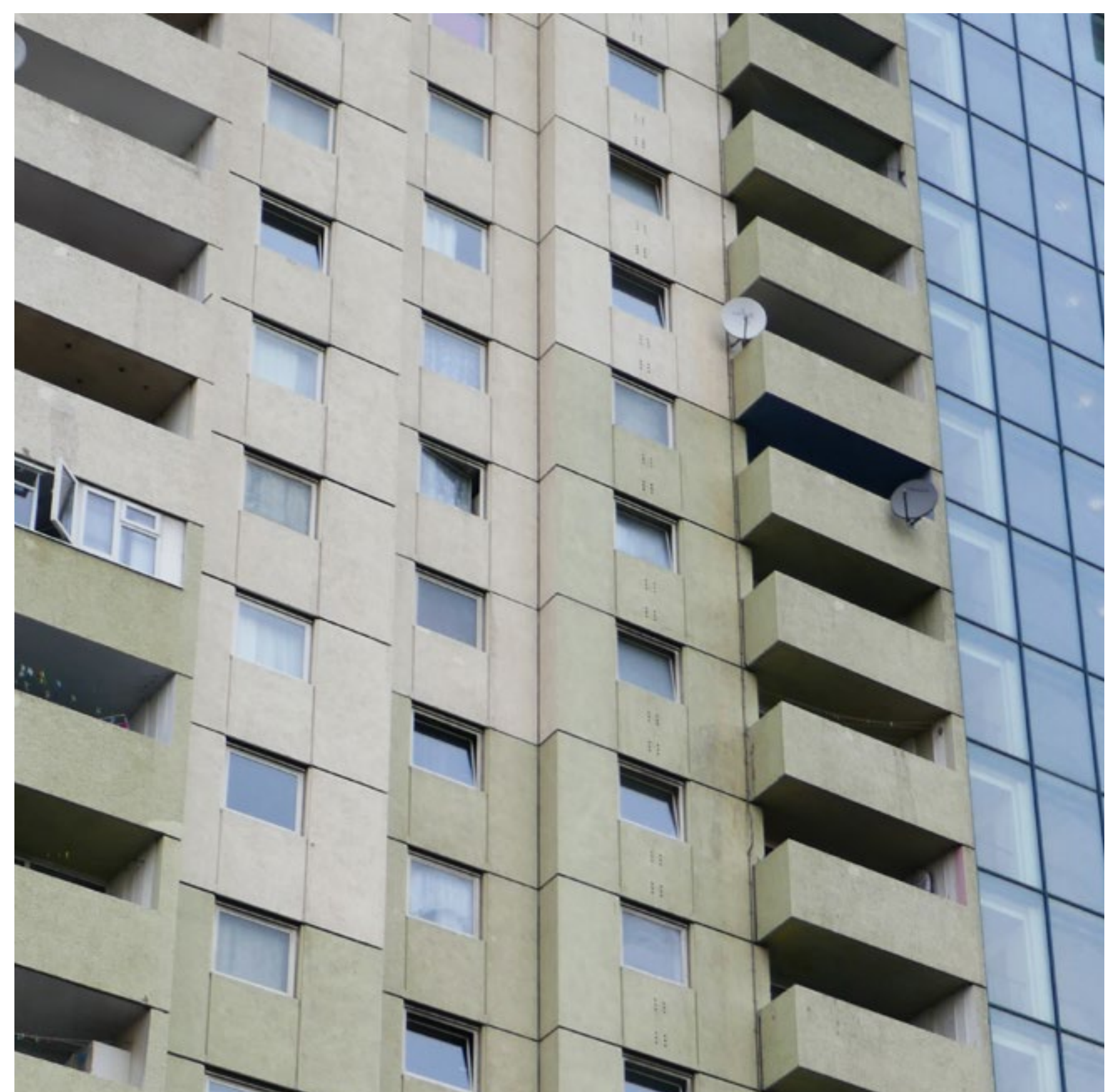
Entrances both to the shopping centre and existing residences are poorly located and lack visibility.



Limited hours of operation and unsurveilled roof terraces create insecure spaces.



The bus station is poorly connected with the shopping centre.



The existing unattractive tall buildings are currently the focal point.

Vision for the future

Our vision is for Edmonton Green to form the heart of lower Edmonton, and to become a desirable destination for the local community to spend time, day or night. In order for this to happen, the centre needs to be better connected with the local area and offer a more diverse range of activities such as shops, restaurants and leisure facilities.



Sketch of the vision for Edmonton Green.

We want to revitalise the shopping centre, provide new open public spaces and deliver new homes for the area. Any redevelopment that takes place will be guided by the following principles:



We want to create a destination that offers a diverse range of uses – locally run shops, restaurants, cafes and other leisure facilities – so it becomes somewhere people want to spend time throughout the day and into the night.



We want to maintain the community feel of Edmonton Green; the market will always be a focal point of the shopping centre, and small independent traders will always have space to trade.



We think it's important to efficiently use land around transport hubs (such as Edmonton Green Overground Station), and the redevelopment is a good opportunity to build more homes at Edmonton Green.



Any development will be done in stages so as to minimise the impact, and ensure continuity of trading.



We want to reduce the dominance of the existing towers with new high-quality buildings that sit well in the surroundings.



We want to join up Edmonton Green with Fore Street and make the whole area more outward looking to minimise anti-social behaviour. We also want to improve pedestrian routes through the shopping centre, and minimise back of house areas.



We want to create streets and squares that can be used by the community.



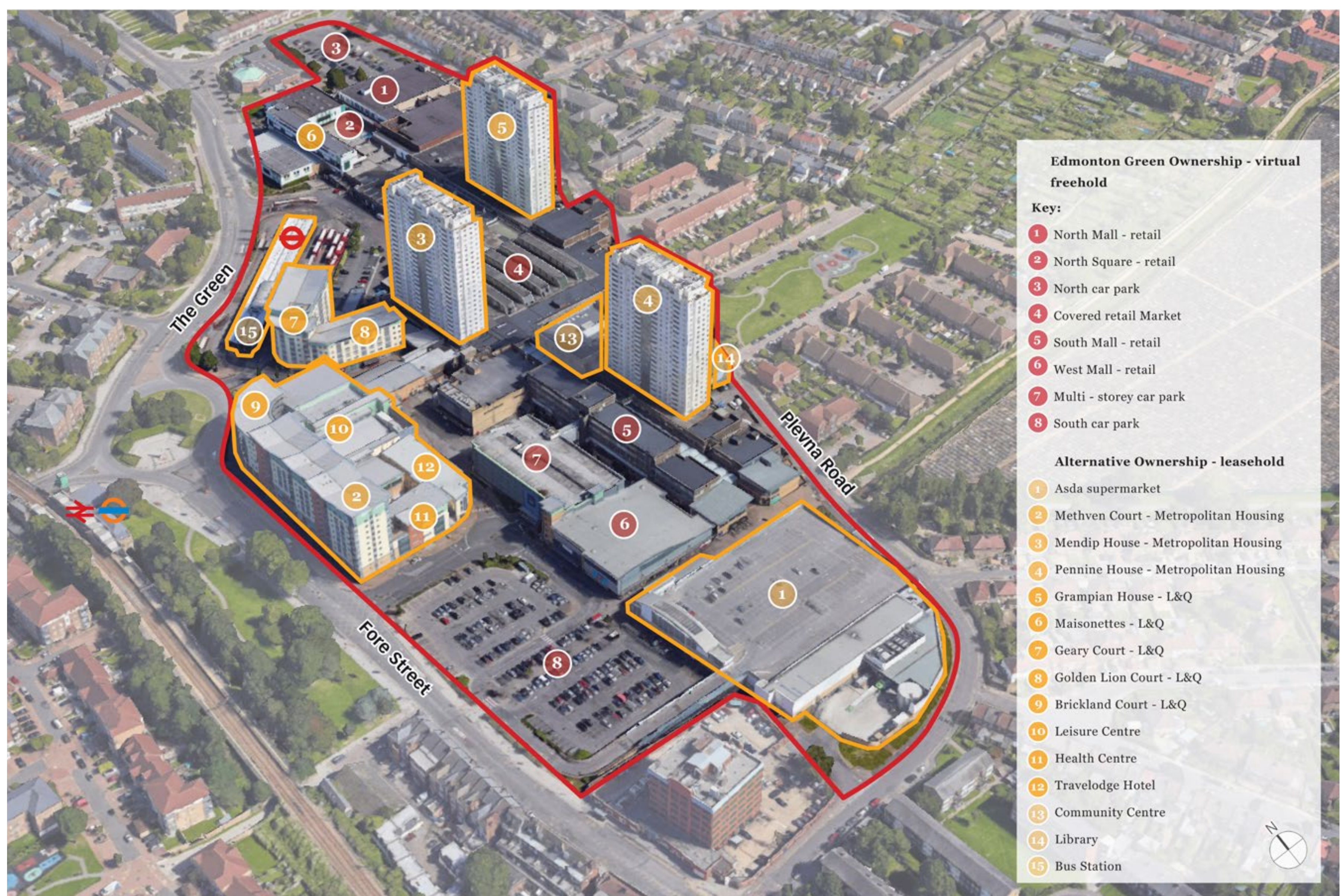
We want to ensure the shopping centre is sustainable and can be enjoyed by future generations.

The history of Edmonton Green and what it looks like now

The shopping centre was developed in the 1970s on the site of a number of homes and shops. The centre was not designed in such a way to fit in with the surrounding neighbourhood and it resulted in the original streets being entirely lost. The centre was then refurbished in 2012. Edmonton Green is owned by Crosstree Real Estate Partners, who bought the site in November 2018.

The current layout of Edmonton Green

This diagram shows the current layout of the shopping centre. The buildings highlighted in orange are not within Crosstree's ownership. Any redevelopment will be focussed on the areas not highlighted in orange at this time.

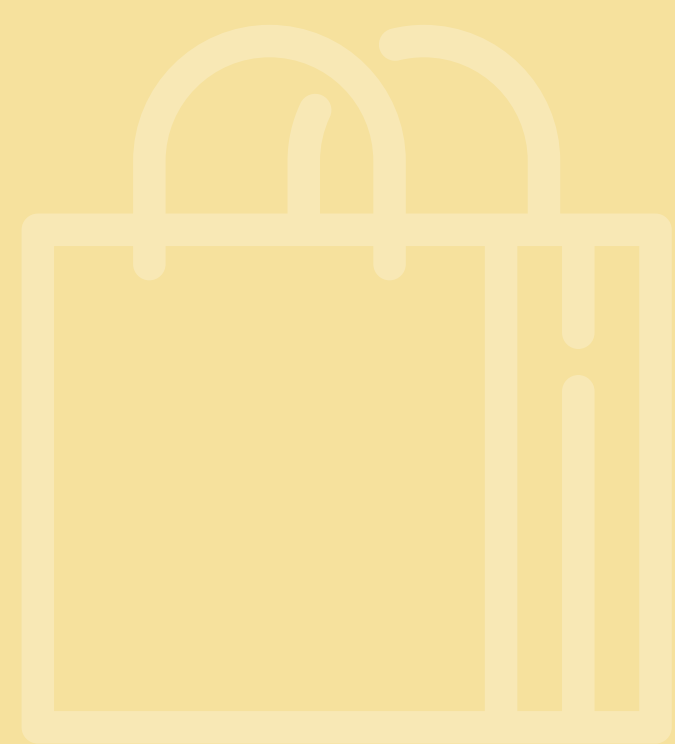


Aerial looking north east toward Edmonton Broadway.

Give us your thoughts on the future of Edmonton Green and help inform the design of a masterplan

What do you currently like about Edmonton Green?

SHOPS



MARKET



FOOD & DRINK



PUBLIC & COMMUNITY SPACES



HOMES



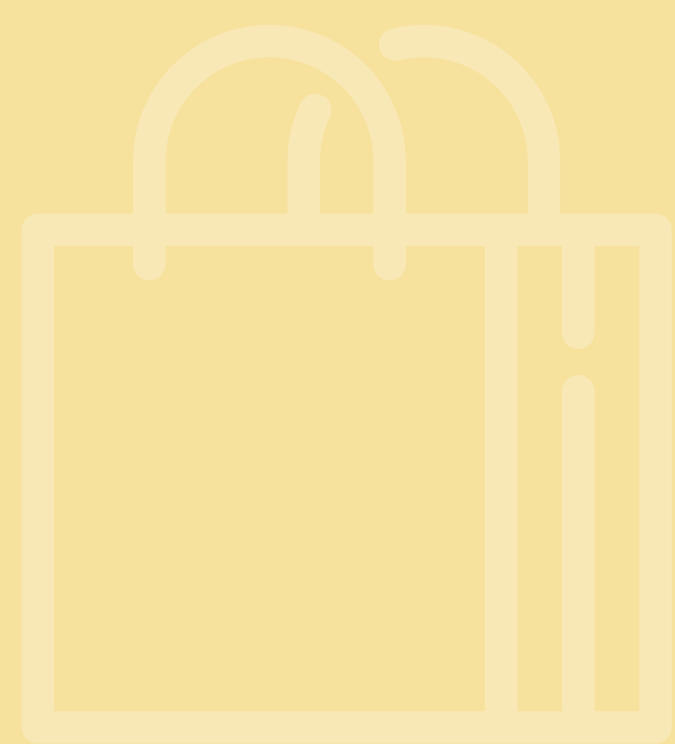
LEISURE FACILITIES



Give us your thoughts on the future of Edmonton Green and help inform the design of a masterplan

What further changes would you like to see to Edmonton Green?

SHOPS



MARKET



FOOD & DRINK



PUBLIC & COMMUNITY SPACES



HOMES



LEISURE FACILITIES



Give us your thoughts on the future of Edmonton Green and help inform the design of a masterplan

**Is there anything else you would like to see in Edmonton Green?
For example, educational or office space?**